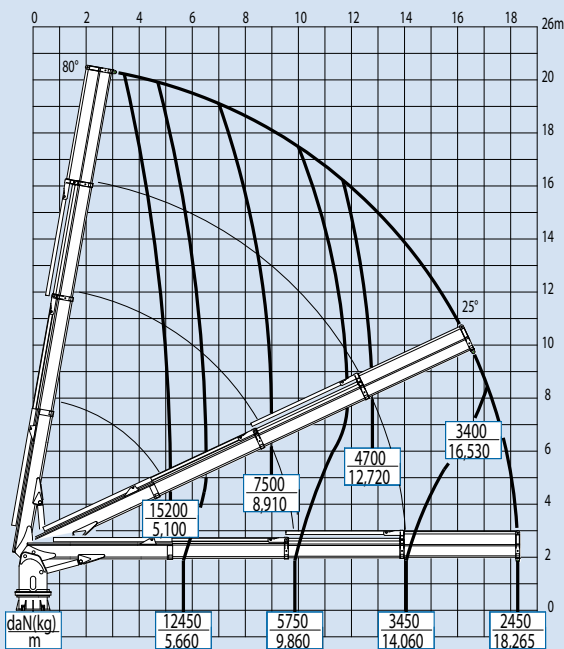


EFFER

DECO 80

LOAD CHART



TECHNICAL CHARACTERISTICS

Description	u.o.m.	2S	3S
Max. hydraulic outreach	m	13,90	18,27
Capacity at max. outreach	kg	4350	2450
Max. lifting moment	kNm	1025	
Slewing arc	(°)	650	
Slewing moment	kNm	95	
Working pressure	bar	255	
Recommended oil delivery	l/min	80	
Weight of the standard crane (± 2%)	kg	6650	7650

*The technical data refers to the version with one slewing system

NOTE: The boom versions and accessories mentioned in this brochure are not the only options available. Lifting capacities are based on the maximum lifting power of the crane. The stability of the crane's base or the installation of some accessories may require derating of the crane. For the complete data and more technical details on the crane performances and operation you are kindly invited to look in the 'Info-tech' section available at your nearest Effer dealer or to download them from the website www.effer.it.



NOTE: Technical modifications may change the stated data.

TECHNICAL DESCRIPTION

- Design according to DIN 15018/H1 B3
- Full fabricated construction with high-grade steel S 690 and S 890
- All steel components shotblasted and protected with zinc primer
- Marine painting cycle
- Slewing ring with double-race ball-bearing driven by reduction gear unit
- Full proportional controlbank with modular elements prearranged for winch installation
- Load moment limit device
- Prearranged support plates for winch mounting
- Up to three hexagonal extensions with single stage cylinders
- Cylinder rods with special NiKrom coating and marine chrome coating
- Hose end fittings protected with heat shrunk shroud
- Stainless steel pipes with stainless steel fittings
- Holding valves flanged directly to the cylinder barrels

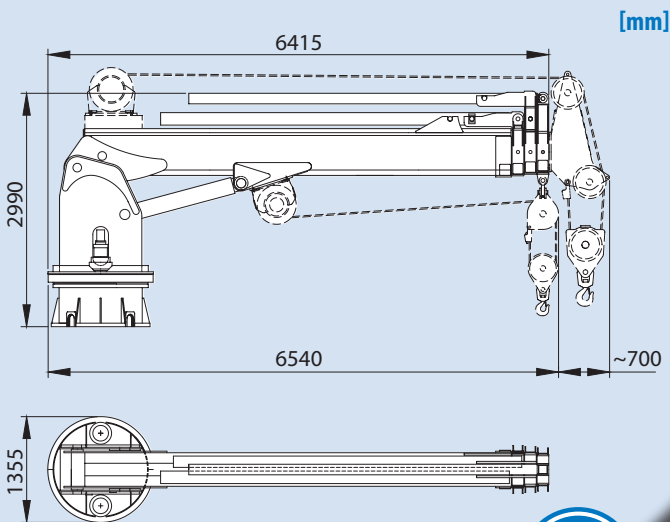
Mod: DECO 80 - Data: 17-05-2007 - Rev. 00

AVAILABLE OPTIONS

- Double slewing system
- Continuous slewing and operator platform with seat for top controls
- Controlbank prearranged for variable pump and radio remote controls
- Winch up to 4000 daN capacity installed under the boom and up to 8000 daN installed on the boom
- End stroke device + Emergency stop
- Centralized greasing

www.inprima.it

OVERALL DIMENSIONS



3S

