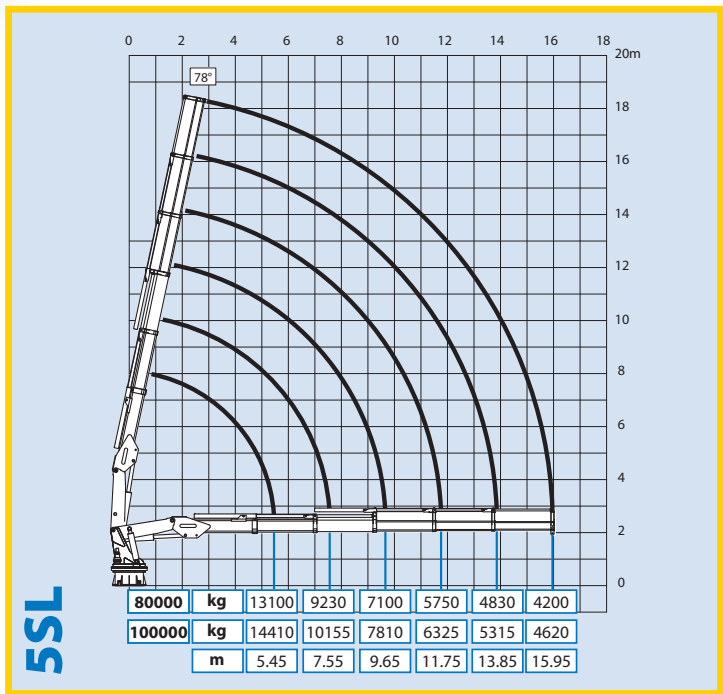


80000 - 100000

LOAD CHART



TECHNICAL CHARACTERISTICS

Description	u.o.m.	1SL**	2SL	3SL	4SL	5SL
Max. hydraulic outreach	m	7,02	9,26	11,50	13,72	15,95
Capacity at max. outreach (80000)	kg	11050	8200	6300	5100	4200
Capacity at max. outreach (100000)	kg	12155	9020	6930	5610	4620
Slewing arc	(°)	650				
Slewing moment	kNm	83,30				
Working pressure	bar	290/310				
Recommended oil delivery	l/min	70/35				
Weight of the standard crane (± 2%)	kg	6595	6940	7305	7690	8090

*The technical data refers to the version with one slewing system / **Special version available on request

NOTE: The boom versions and accessories mentioned in this brochure are not the only options available. Lifting capacities are based on the maximum lifting power of the crane. The stability of the crane's base or the installation of some accessories may require derating of the crane. For the complete data and more technical details on the crane performances and operation you are kindly invited to look in the 'Info-tech' section available at your nearest Effer dealer or to download them from the website www.effer.it.



NOTE: Technical modifications may change the stated data.

TECHNICAL DESCRIPTION

- Design according to DIN 15018/H1 B3 – Integrated by 5°/2° Heel/Trim
- Full fabricated construction with high-grade steel S 690 and S 890
- All steel components are shotblasted and protected through cathodic electroplating
- Marine painting cycle
- Slewing ring with double-race ball-bearing driven by reduction gear unit
- Full proportional controlbank with modular elements prearranged for winch installation
- Load moment limit device
- Prearranged support plates for winch mounting
- Up to five hexagonal extensions with single stage cylinders with marine chrome coating
- Knuckle cylinder with stainless steel rod and marine chrome coating or equivalent
- Hose end fittings protected with heat shrunk shroud
- Stainless steel pipes with stainless steel fittings
- Double special hydraulic circuit (model 100000 only)

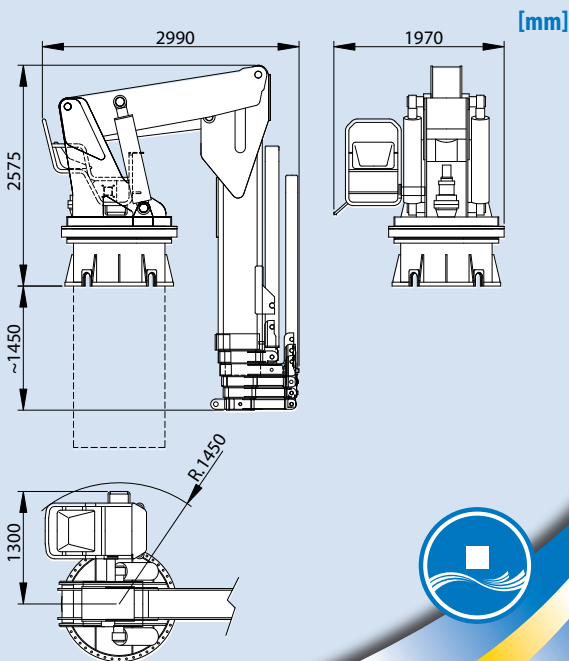
Mod: 80000 - 100000 - Data: 17-05-2007 - Rev. 00

AVAILABLE OPTIONS

- Mechanical extensions stowable in the boom
- Double slewing system
- Continuous slewing and operator platform with seat for top controls
- Controlbank prearranged for variable pump and radio remote controls
- Winch up to 6000 daN capacity installed under the 2nd boom and up to 8000 daN installed on the 1st boom
- End stroke device + Emergency stop
- Up to 2 supplementary controls for hydraulic accessories
- Centralized greasing

www.inprima.it

OVERALL DIMENSIONS



5SL

