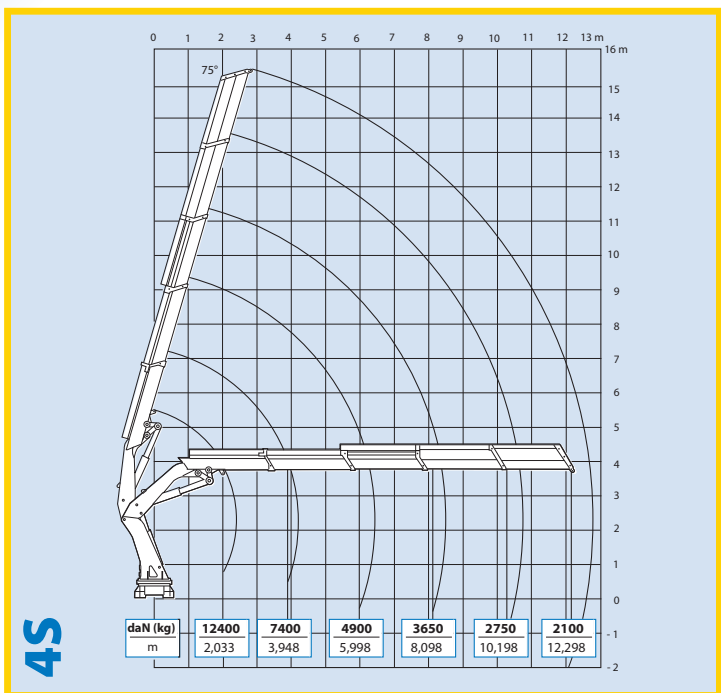


EFFER

31000

LOAD CHART



TECHNICAL CHARACTERISTICS

Description	u.o.m.	2S	3S	4S
Max. hydraulic outreach	m	7,88	10,09	12,30
Capacity at max. outreach	kg	3900	2800	2100
Max. lifting moment (+31°)	kNm	301,30	297,60	289,70
Slewing arc	(°)	620		
Slewing moment	kNm	41,90		
Working pressure	bar	250		
Recommended oil delivery	l/min	45		
Weight of the standard crane (± 2%)	kg	3380	3570	3850

NOTE: The boom versions and accessories mentioned in this brochure are not the only options available. Lifting capacities are based on the maximum lifting power of the crane. The stability of the crane's base or the installation of some accessories may require derating of the crane. For the complete data and more technical details on the crane performances and operation you are kindly invited to look in the 'Info-tech' section available at your nearest Effer dealer or to download them from the website www.effer.it.



NOTE: Technical modifications may change the stated data.

TECHNICAL DESCRIPTION

Mod: 31000 - Data: 17-05-2007 - Rev. 00

- Design according to DIN 15018/H1 B2
- Full fabricated construction with high-grade steel designed for installation in reduced spaces
- All steel components are sandblasted and protected through cathodic electroplating and marine painting cycle
- Pins with Nichel protective coating in bronze bushings
- Slewing ring with double-race ball bearing driven by reduction gear unit
- Extensions with single stage cylinders
- Self lubricating sliding pads on the boom extensions
- Sequence valves on the extensions cylinders
- Cylinders rods with special NiKrom coating and marine chrome coating
- Proportional control bank prearranged for winch installation
- Stainless steel pipes with stainless steel fittings
- Holding valves flanged directly to the cylinder barrel
- Hydraulic components protected by casings

AVAILABLE OPTIONS

- Manual retracting extensions with extension blocking device
- Up to 2 supplementary controls for hydraulic accessories
- Winch up to 3500 daN capacity
- End stroke device + Emergency stop
- Load moment limit device
- Fully proportional controlbank with modular elements prearranged for radio remote controls
- Radio-control

www.inprima.it

OVERALL DIMENSIONS

